

2 POSTS LIFT

ELECTRO HYDRAULIC

[OSA·NSA SERIES]



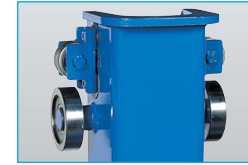
LONGER WARRANTY MODEL
INDUSTRY LEADING WARRANTY (Except consumed parts)



LONG SELLER SERIES WITH SUPERIOR COLUMN STRENGTH



Valuable Features



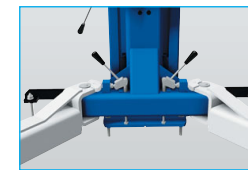
ROBUST CARRIAGE DESIGN

Solid steel bearings.
Lubricated & sealed for extended service life.



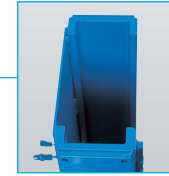
SAFETY HOOK

Safety hook feature direct and positive engagement in Main Column for maximum safety against chain break.



AUTOMATIC ARM RESTRAINT WITH DUAL LEVER

Arms restrain automatically when lifting up for maximum safety. Dual lever allows you to adjust arms individually for easy and smooth setting of lifting point.



SUPERIOR COLUMN STRENGTH

Hot rolled channel made especially for Bishamon forms on the basis of the load bearing structure for maximum strength.



LIFT CHAIN

Chain is used instead of cable for maximum safety and reliability.



SAFETY ROD AND CATCH GEAR

Safety rod is equipped in Sub Column for maximum safety against chain break.

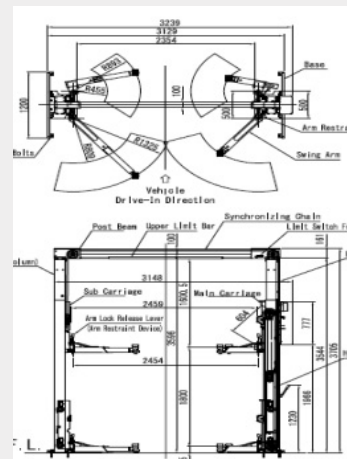


BODY CONTACT PADS

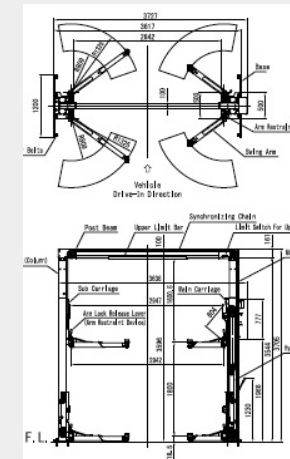
Various kinds of Pads are available. See page 8 to know more details.

Specifications

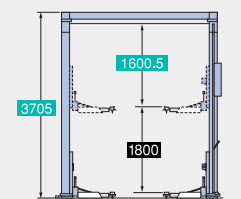
OSA3500N



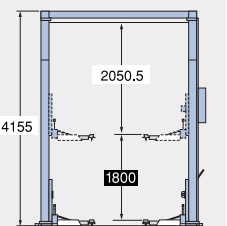
NSA3500N



STANDARD POST [OSA3500N] [NSA3500N]



HIGH POST [OSA3500NH] [NSA3500NH]



Model No.		OSA3500N	NSA3500N	OSA3500NH	NSA3500NH
CAPACITY		3500 kgs.			
VERTICAL TRAVEL		1800mm			
CONTROL		LEVER TYPE			
POWER		3 PHASE			
MOTOR		1.5kW 4P 10 Minutes Rating			
LIFTING TIME TO MAX. HEIGHT (APPROX.)	60Hz	59 sec.			
	50Hz	70 sec.			
OIL VOLUME		8L (ISO VG32)			
WEIGHT OF AUTOMATIC LIFT EQUIPMENT		890 kgs.	910 kgs.	925 kgs.	945 kgs.
WEIGHT OF MAXIMUM VEHICLE INCLUDING LOAD CALCULATION		4200 kgs.			
TOTAL WEIGHT REQUIREMENT NECESSARY FOR EQUIPMENT AND VEHICLE		5090 kgs.	5110 kgs.	5125 kgs.	5145 kgs.